

“Flowers and Whirly Gigs Gathered Skirt and Polo Top”



Flowers and Whirly Gigs Oh My! You do not have to be a professional seamstress to make this quick skirt and decorated top. No pattern is needed for the skirt. Just straight sewing! You will, however, need to measure the little girl that will be wearing this darling outfit for the exact length. The skirt also has a growth tuck that can be let out as she grows. Why? Because she is going to love this skirt and wear it often because you made it for her!

**Skill Level:** Basic

**Created by:** Paula Spoon, QA Software Baby Lock

## Supplies:

Designer's Gallery® Interactive™ Simply Trims (EDG-INT3)  
Baby Lock® sewing and embroidery machine with 5 x 7 hoop or larger  
Serge (Optional for seam construction)  
All-purpose thread to match fabrics  
Robison Anton Rayon variegated machine embroidery thread: #2345  
Kelly, 2344 Red  
1/3 yd green pima cotton gingham check (Spechler-Vogel gingham)  
1/4 yd pink pima cotton gingham check (Spechler-Vogel gingham)  
3/4" wide elastic for waistband  
Baby Lock Dissolve Away Mesh Stabilizer (BLS500)  
Girls purchased polo shirt  
Full size iron  
Hand needle  
Scissors, rotary cutter, ruler, and mat  
Water soluble marking pen

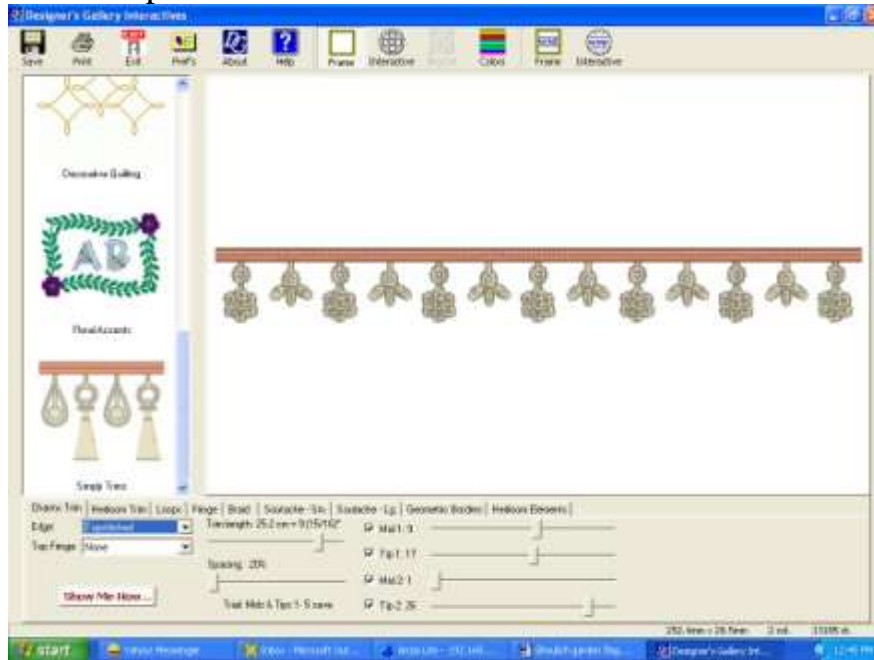
## Instructions:

The trims were sewn with the Baby Lock BMP8 embroidery machine, but, you can use any embroidery machine. Use the largest embroidery hoop, and make the trim as long as you can. The rows of trim are easily tacked together using a bar tack or drop the machine's feed dogs and use a 4.5mm wide zig-zag stitch. In creating the trim for the skirt and polo shirt, follow the directions below. This is an unlimited program to create your very own look so don't be afraid to use your own combinations. Embroider as many rows as you will need for the skirt and polo shirt.

At the computer with Interactive Simply Trims:

1. Open Interactive Simply Trims.
2. Set the controls for the following settings to create the trim for the skirt: (*See the illustration below for the settings.*)
  - Click on the Charms Tab.
  - In the Edge field, select Topstitched.
  - Set the Spacing at 20% by moving the slide bar.
  - To set the Trim Length, open the Preferences on the top toolbar and type in the size of the hoop that will be used. In the sample the 200mm x 300mm hoop was used. Slide the scroll bar until the size is smaller than the chosen hoop. The setting that was used for the shown sample was 298.2mm x 28.5mm.
  - Set the Top Fringe field to None.
  - For the Mid 1 setting, slide the scroll bar to 9.
  - Set Tip 1 at 17.

- Set Mid 2 at 1.
- Set Tip 2 at 26.



3. Follow the next group of settings to create the trim for the polo shirt:

- Select the Charms tab
- Set the Edge to Topstitched.
- Set the Spacing at 20%.
- Slide the Trim Length, by sliding the scroll bar until the size is smaller than the chosen hoop. The setting that was used for the shown sample was 298.2mm x 28.5mm.
- Set the Top Fringe to None.
- Set the Mid 1 field to 1.
- Set the Tip 1 field to 8.
- Set the Mid 2 field to 1.
- Set the Tip 2 to 8.

4. Click on the Save icon and save as a .pes file to the media device that your embroidery machine will read.

5. Hoop two layers of the Baby Lock Dissolve-Away Mesh Stabilizer.

6. Embroider as many rows for each of the designs to trim the skirt and polo shirt.

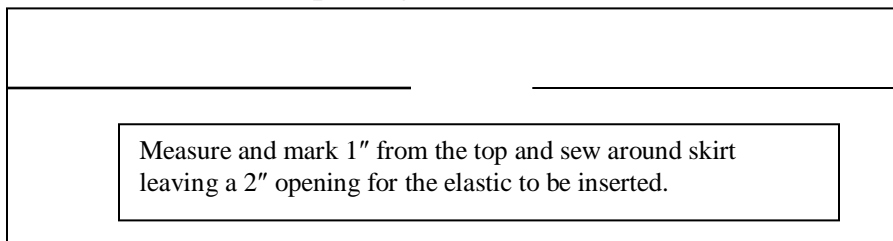
7. Wash away the stabilizer in cool water. Use a mild soap for fine fabric to remove any remaining stabilizer. Lay the trim on a flat surface to dry.

8. Press the flowers and whirly gigs.

#### Skirt Construction and Polo Shirt Trim:

1. Cut one piece of the green gingham fabric 11" x 45" for the green tiers.
2. Cut one piece of the pink gingham fabric 5 1/2" x 45" for the pink tier.
3. Sew together the short ends of each tier using a 5/8" seam allowance.

4. Set up the serger for a 3-thread narrow stitch and serge the edges of the side seams. (If you do not own a serger, set up your sewing machine for a zig-zag stitch with the settings at 3.5 for the width and 2.5 for the length.
5. To hem the skirt, fold under ½" and press with an iron. Fold the raw edge under to create ¼" hem. Press. Using a straight stitch topstitch close to the edge to secure the hem.
6. To create a growth tuck on the green gingham, measure 3" from the bottom edge of the hem and mark with pins. Fold on the pin line and press. Using the throat plate on the machine as your guide, sew ¾" from the folded edge to create the growth tuck. Press the growth tuck flat.
7. On the wrong side of the pink and green skirt pieces, sew the trim to the hem.
8. To create the waistband, pin the right side of the pint tier to the wrong side of the green tier. Sew the seam together using a ¼" seam allowance.
9. Fold the pink tier to the front and press the seam open.
10. Measure 1" from the top of the skirt and mark around the edge.
11. Sew along the 1" marks with a straight stitch, leaving a 2" opening for inserting elastic.
12. Using an elastic guide or safety pin, feed the elastics through the opening.
13. Overlap the two elastic ends and sew them together.
14. Sew the waistband opening closed.



15. Hand or machine sew the trim to the collar, front placket and pocket areas on the polo shirt.

Other suggested patterns that are great for Simply Trims: (*These patterns are designed for 6 months to young teen girls.*)

Easy Pieces Jumper – Pants – Patchwork purse set: SBPSET

Quick and Comfy Dresses: SB2QC

Little Hip Skirts: FAVL007

For other exciting projects like this one, visit our Web site at [www.designersgallerysoftware.com](http://www.designersgallerysoftware.com)

