

“Studio III – Wall Art”



All it takes is a bare wall, fabric, foam core board, an Amazing Designs collection, and Studio III to create this wall art. The rest is up to you and your sewing and embroidery machine. The wall art will fit behind a couch or can even be used as a headboard. However you use it enjoy your art!

Skill Level: Intermediate

Created by: Diane Kron, Software and Embroidery Project Manager


Supplies:

Baby Lock® Ellisimo sewing and embroidery machine
(200mm x 200mm hoop)
Studio III from Designer's Gallery®
Paisley I Amazing Design Collection (ADC-31J)
2 Yards each of 4 paisley print fabrics
3 Yards of light colored flannel for backing
Baby Lock® Tear-Away stabilizer
Temporary spray adhesive
Foam core boards
Chaco Liner
Tacky Glue
Sewing and embroidery thread
General sewing and embroidery supplies

Instructions

In this project I will show you how to create a monochrome design using Studio III. Only one design will be illustrated in the directions, but you can use any design while following the same set of directions. In the sample there are six embroidered sections. If you wish to combine designs, do so according to your taste.


At the Computer:

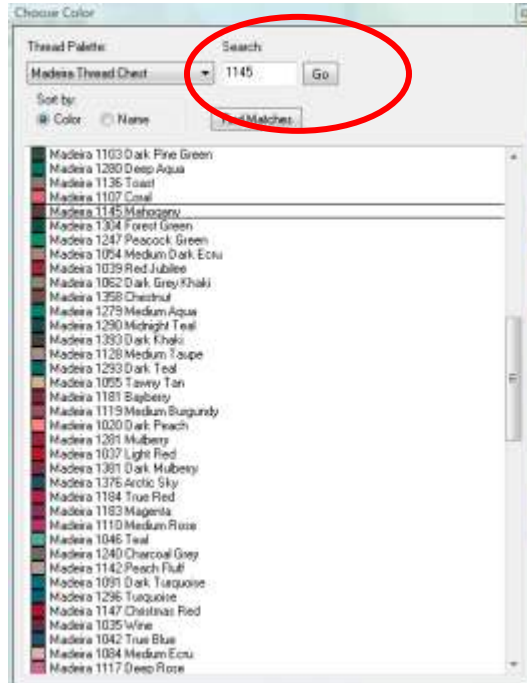
1. Open the program by clicking on the Studio III  icon on the desktop.
2. Select design # paisley13.pes by left clicking on it. The design will be displayed under the workspace with the color list to the right. If you are using a different color list, click on the down arrow and choose the thread Manufacturers' catalog that you will be using. If you wish to save the design with the new list, click on "Save". (*See the illustration*




3. To convert all of the colors to the same color, click on the

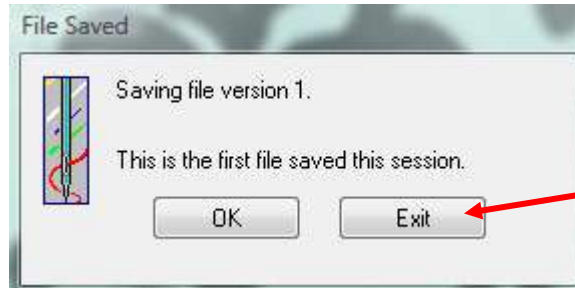
ColorWorks  icon on the top toolbar and follow the next set of directions:

- Left click on the first color to select that portion of the design.
- Click on the Change Colors  icon.
- Select the Madeira Thread Chest from the Thread Palette field.

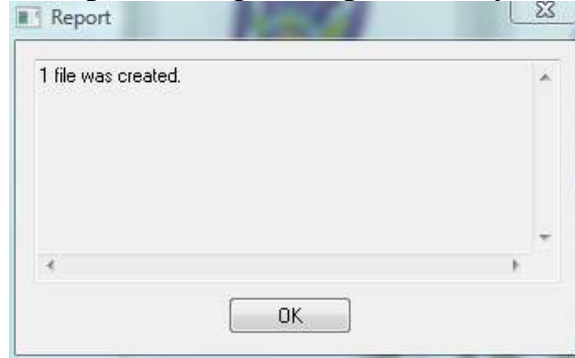


- In the Search field, enter in # 1145 and click on Go.
- Scroll down and select Madeira 1145 Mahogany to apply the color change.
- Select the second color on the list.
- Select the Madeira Thread Chest from the Thread Palette field.
- Click on Go and then select Madeira 1145 Mahogany to apply the color change to the second color.
- Click on the third color listed.
- Select the Madeira Thread Chest from the Thread Palette field.
- Click on Go and select Madeira 1145 Mahogany to apply the color change to the third color.
- Select the fourth color.
- Select the Madeira Thread Chest from the Thread Palette field.
- Select Go and select Madeira 1145 Mahogany to apply the color change to the fourth color.
- Close out of the Choose Color field by clicking on the red x in the top right corner.

- Click on the Save  icon and when the dialog box opens click on Exit.



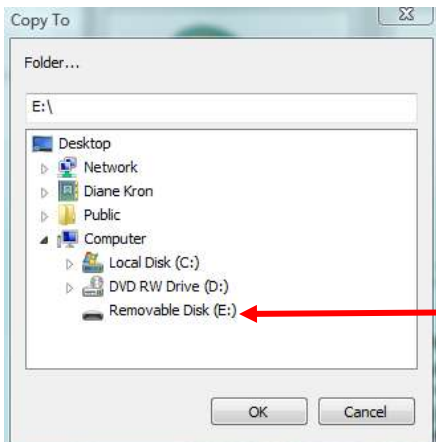
- A Report dialog will open to let you know one file was created.



4. To save the modified design to the thumb drive, select the new design file.



5. Click on Edit menu, Copy to. When the Copy To folder opens, select the removable Disk (E). Click on Ok to send the design to that drive. You have created and saved a monochrome design.



At the Cutting Table:

1. The following sized boards will be covered by the embroidered fabric sections. From the foam core and the lighter print fabrics, cut out the size sections listed below. Cut the fabrics 4" wider and longer than the boards. The additional two inches will be used for covering the foam core by gluing two inches on the back side of the boards.
 - 2 - 4" x 5 1/2" and cut 1 each from both prints.
 - 2 - 6 1/2" x 8" and cut 1 each from both prints.
 - 1 - 7 1/2" x 10" and cut 1 from the first light print.
 - 1 - 10" x 10" and cut 1 from the second light print.
2. For the larger boards on which the embroidered sections will be placed: Cut the following sizes from the foam core boards along with the fabrics. The fabrics should be cut 4" wider and longer than the foam core board sizes. The flannel will be used as the backing for the print fabrics and will be quilted together to form the covering for the boards in a later step.
 - 22" x 30" foam core board; cut one each from the flannel fabric and the dark brown paisley print.
 - 10" x 24" foam core board; cut one each from the flannel fabric and the dark brown paisley print.
 - 18" x 38" foam core board; cut one each from the flannel fabric and the medium dark paisley print.
 - 22" x 30" foam core board; cut one each from the flannel and light paisley print.
 - Cut 2 foam core boards 7" x 16" and cut two each from the flannel and the light floral print.
 - Cut one board 10" x 18" and cut one each from the flannel and from the light floral print.

Embroidery:

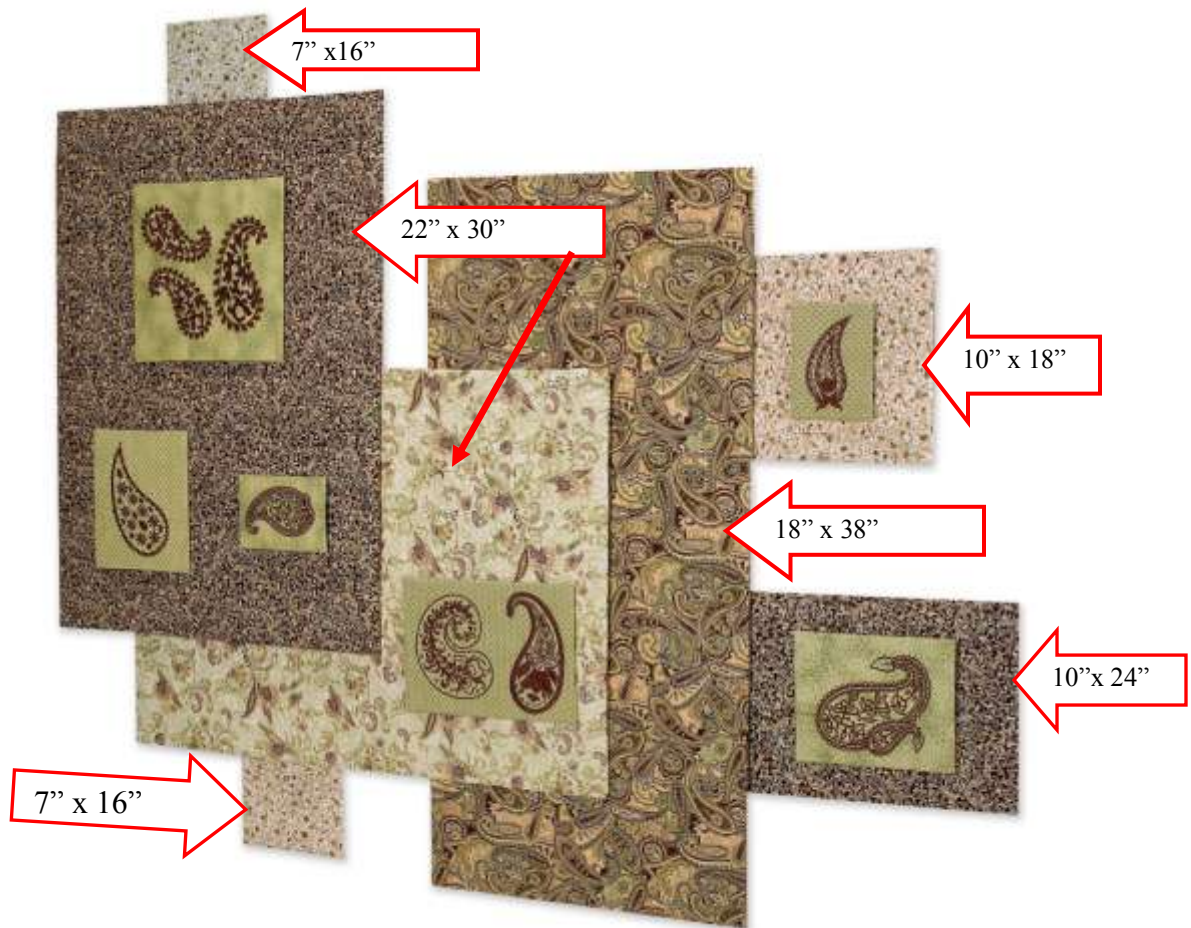
1. Hoop the Baby Lock® Tear-Away stabilizer using the 200mm x 200mm hoop. Spray lightly with the temporary spray adhesive.
2. On each of the lighter print sections, using a Chaco Liner to draw two lines down the center that cross to determine the center.
3. Place the marked fabric in the center of the hoop, making sure that the cross marks on the fabric line up with the marks on the hoop. Finger press in place.
4. With the machine, on retrieve the monochrome colored design.
5. Position the needle over the center cross mark and embroider the design using Madeira embroidery thread.
6. Repeat for the other 6 boards. On the larger boards, repeat the same design or combine more than one design to complete the board.

7. Stretch the embroidered fabric sections over the corresponding foam core board and glue on the backside of the board. Repeat until all of the boards have been covered.

Board Covers –Quilting

These directions can be used for each of the board covers. Be sure that you use the flannel sections that are 4” larger around than the paisley prints.

1. On a flat surface, place the flannel section. Spray lightly with the temporary spray adhesive. Place the paisley print on top of the flannel. With the machine set up for quilting, quilt the layers together using a stippling stitch.
2. Stretch the quilted fabric over the corresponding foam core board and glue on the backside of the board. Repeat until all of the boards have been covered.
3. Assemble the boards as shown in the following illustration to complete the look:.



4. Place hook and loop fasteners to hold the sections together.
5. Place the pinned template inside the hoop making sure that the cross marks on the template line up with the marks on the hoop. Finger press in place.
6. Retrieve the single ginkgo design from the thumb drive.

7. Position the needle over the center cross mark and embroider the design using light blue embroidery thread.
8. Repeat with the single ginkgo design until the bottom edge of the front and back sections have been embroidered.
Enjoy!

For other exciting projects like this one, visit our Web site at www.designersgallerysoftware.com



Your Email Could Use A Little Embroider-E

Subscribe to the only embroider e-news devoted to embroidery software today :)



Designer's Gallery[®]
Lets Embroidery Designs Work For You