

## “Chair Back Book Holder - HoopWorks”



Here is a great way to remove the clutter in a class room with this Chair Back Book Holder. Many classrooms have very little storage space or room to move about, so teachers will love having one to hang on the back of each child's chair. HoopWorks from Designer's Gallery will be used to divide the design into sections so it will fit in the Sofia Sewing and Embroidery machine's stitch field.

**Skill Level:** Intermediate

**Created by:** Diane Kron, Software and Embroidery Project Manager

**Supplies:**

Baby Lock® Sofia sewing and embroidery machine

Multi- position hoop (EF71)

Studio III or CustomWorks from Designer's Gallery® (Studio III will be referred to in the project notes)

HoopWorks tool pack from Designer's Gallery

Robots Design Collection from Amazing Designs (ADC-86J)

1 Yard denim or duck fabric

Baby Lock® Tear-Away stabilizer

Temporary spray adhesive

Chalko marker

Sewing and embroidery thread

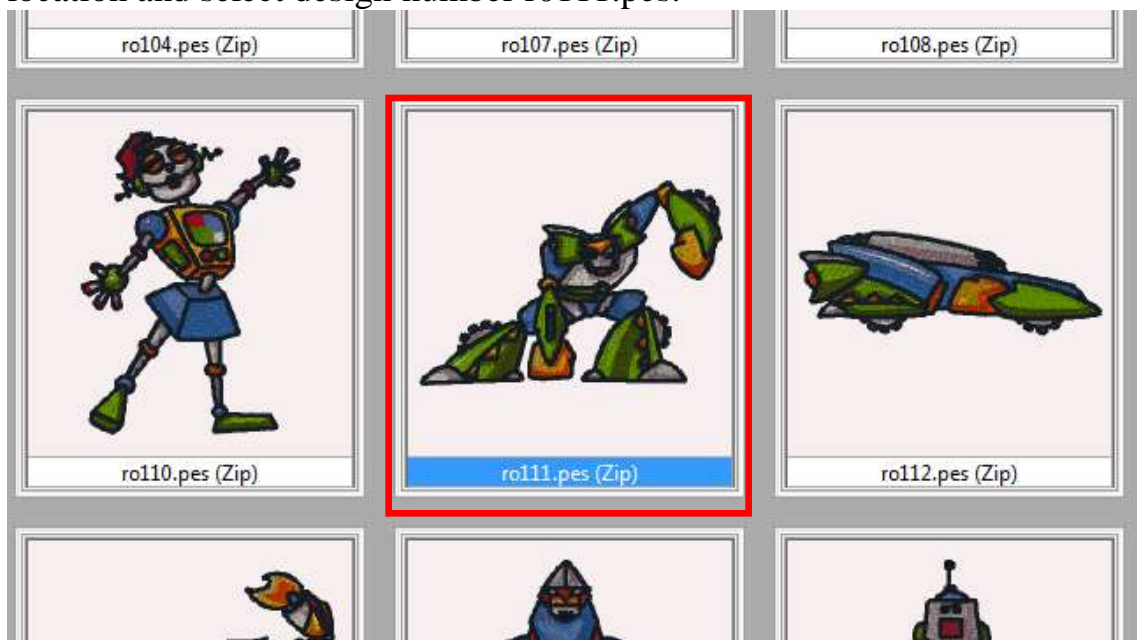
General sewing and embroidery supplies

**Instructions**

**At the Computer:**

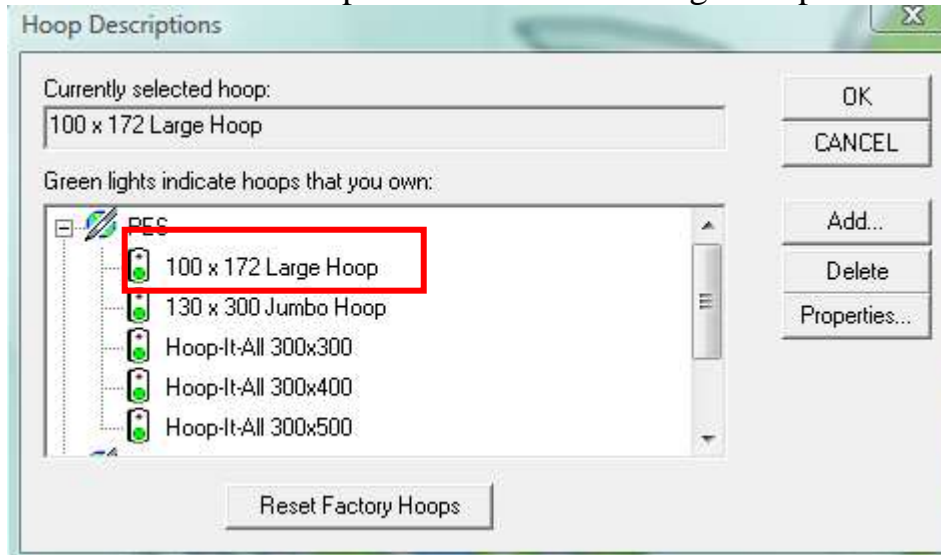


1. Open the program by clicking on the Studio III icon on the desktop.
2. To retrieve the design, locate the design collection from its installed location and select design number r0111.pes.

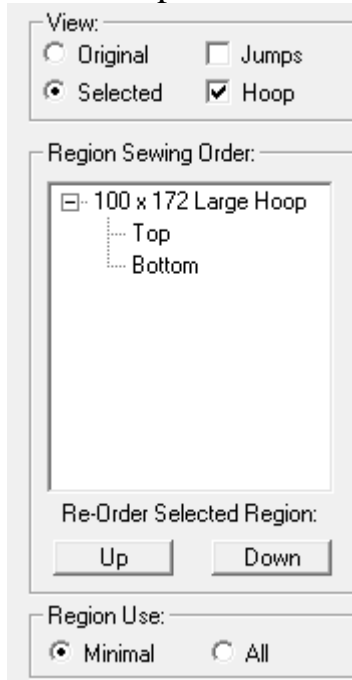


3. To split the design, click on menu Toolpacks and from the drop down select HoopWorks.

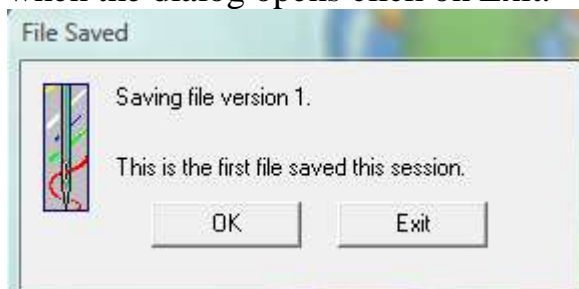
4. To select the hoop, click on the Hoops Available  icon on the top toolbar. Select the hoop named 100 x 172 Large Hoop. Click on OK.



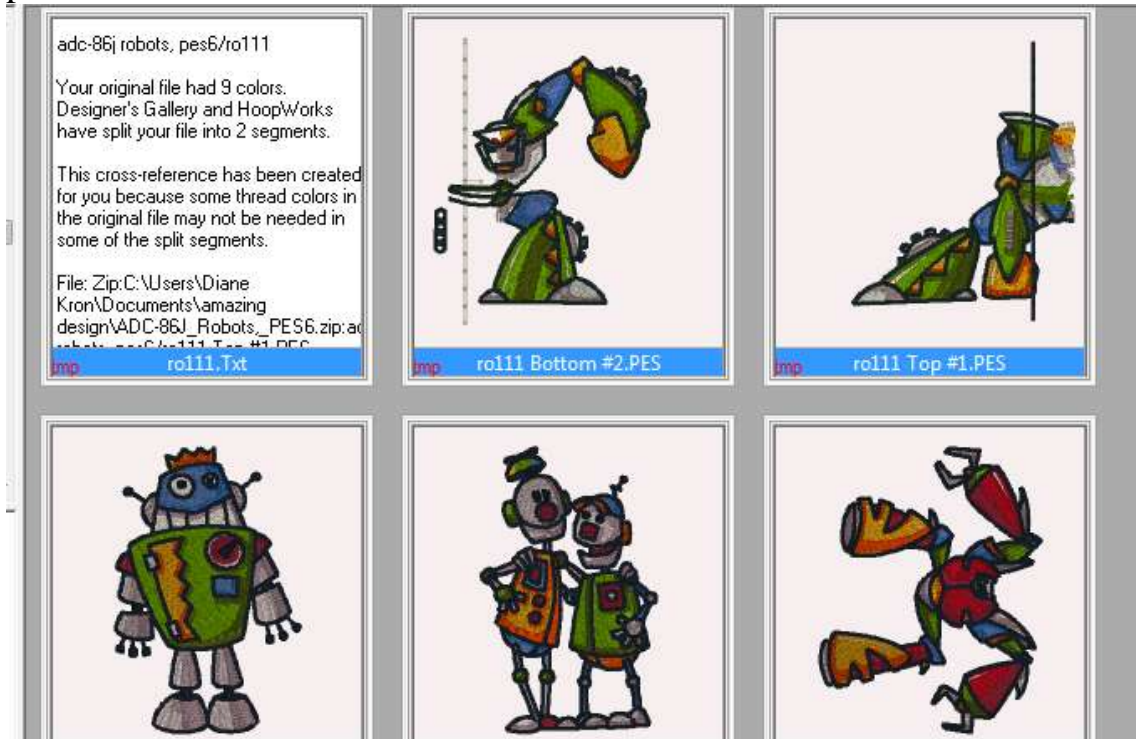
5. In the Region Use field, select Minimal. This will split the design with the fewest number of sections. The design will have two sections named Top and Bottom (*as shown in the following illustration*).



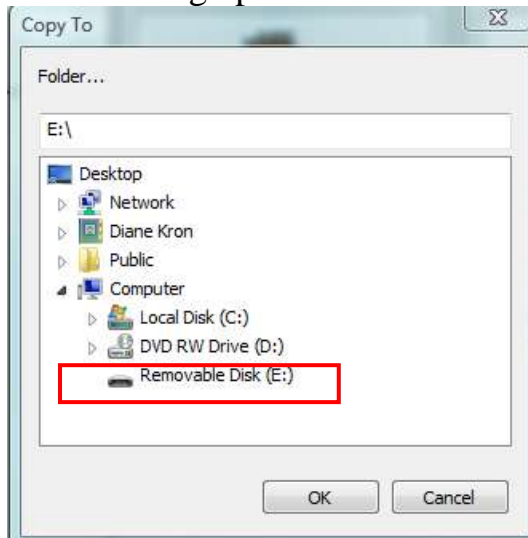
6. The sections are split and ready to be saved. Click on the Save icon and when the dialog opens click on Exit.



- An additional dialog will let you know that 3 files were saved. Click OK. The first file is the information sheet that will be used for changing colors during embroidery. The second and third files are the actual stitch files. They will be labeled Top and Bottom while using the original design number. Click on the first file labeled ro111.txt and print out the information sheet.



- Turn the Sofia sewing and embroidery machine to the on position. Set the machine up for embroidery. Attach the USB cable to the computer and the opposite end into the machine.
- Click on ro111Top#1/pes and click on the Edit menu. From the drop down menu, select Copy To. When the dialog box opens, click on Removable Disk (E:). At this point another dialog will open to let you know that the file had been written to the machine. Repeat for the Bottom design prior to embroidering that section.



### **At the Cutting Table:**

1. From the folded edge of the fabric measure inward 17". Cut the length of the fabric on the 17" line using a straight edge ruler.
2. To place a cross line for design placement, and to get a visual on how the chair back will look, fold the top down 6" and pin in place. This will be the portion that will hook over the chair. Turn the section over and fold the bottom edge up 12½". This area will form the pocket. To determine the center from top to bottom, place a mark using a Chalko marker at the 6 ¼" point. Measure the width and mark the center point. Draw a straight line from top to bottom and from side to side. The center point for the design is where the two lines cross. Indicate the top by drawing an arrow going upward. This will be very helpful when stitching the design to make sure that the design is stitched right side up.

### **At the Embroidery Machine:**

1. Hoop the stabilizer in the three position hoop (100mm x 172mm) and spray with the temporary spray adhesive.
2. Remove the pins and open up the fabric and place the cross marks on the fabric in the hoop, making sure that the cross marks line up with the markings on the hoop and the arrow is pointing upward. Finger press smooth in the hoop.
3. Using the two top slots on the hoop, place the hoop onto the embroidery unit.
4. Select the top design unit for embroidery. Follow the print out as a color guide. Embroider the design unit.
5. Remove the hoop from the embroidery unit and re-attach the hoop placing the bottom two slots onto the embroidery unit.
6. Retrieve the bottom design unit and embroider the design following the guide as a reference. Use the same colors that were used on the first unit.
7. Remove the hoop from the machine and gently remove the fabric from the stabilizer.
8. Hoop another piece of the stabilizer using the standard hoop that came with your machine and spray with the temporary spray adhesive.
9. Determine the placement for the lettering and mark with the Chalko marker.
10. Place the fabric with the mark in the center of the hoop.
11. Select one of the built-in fonts from the machine and spell out the child's name. Use a medium size font setting or if you have a smaller name, you can use the large font setting.
12. Embroider the name on the chair back.
13. Remove the stabilizer from the fabric.

### Finishing the Chair Back:

1. Fold the chair back in half with right sides together and stitch the 17" side together using a 1/2" seam allowance. Press the seam open and turn the right side out. The unit at this time will look like a tube. Press the top and bottom of the tube inward 1/2". Topstitch 1/4" from the edge.
2. Fold the bottom upward 12" with the design showing on the outside. This will form the pocket. Pin in place.
3. Turn the chair back over and fold the top down to meet the top of the pocket. Pin in place.
4. To finish the Chair Back, topstitch the edges 1/4" and then 1/2" along both side edges.



*Your Email Could Use A Little Embroider-E*



Subscribe to the only embroider e-news devoted to embroidery software today >

*Designer's Gallery*<sup>®</sup>  
Lets Embroidery Designs Work For You

For other exciting projects like this one, visit our Web site at [www.designersgallerysoftware.com](http://www.designersgallerysoftware.com)