

“MasterWorks II Lettering Tutorial”



This free tutorial will cover lettering using MasterWorks II. Using TrueType™ fonts can increase your lettering capabilities tenfold while adding many creative possibilities to your embroidery library.

**Skill Level:** Intermediate

**Created by:** Diane Kron, Software and Embroidery Project Manager

## Supplies:


MasterWorks II from Designer's Gallery®

## Tutorial:

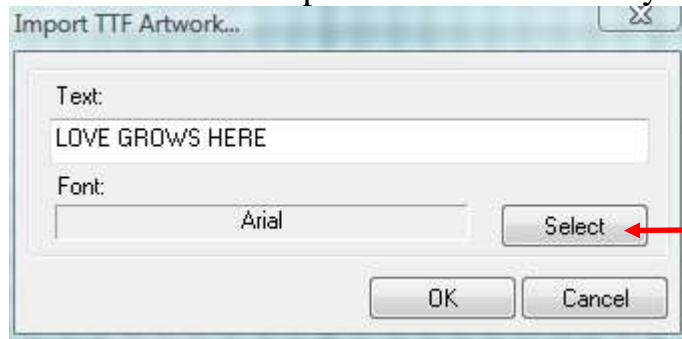
### At the Computer:



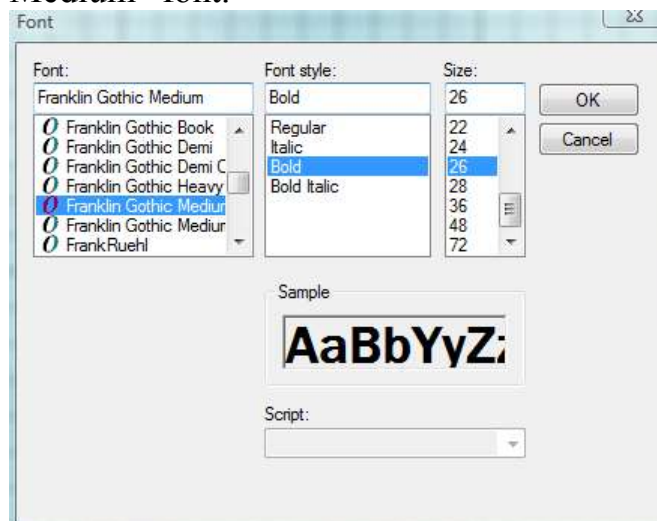
1. Open the program by clicking on the MasterWorks II icon on the desktop.
2. To retrieve the TrueType font from your computer, click on Import

TTF Artwork  icon on the left toolbar and follow the next set of steps:

- When the dialog opens, type in “LOVE GROWS HERE” in the Text field.
- Click on Select to open the TTF folder on your computer.

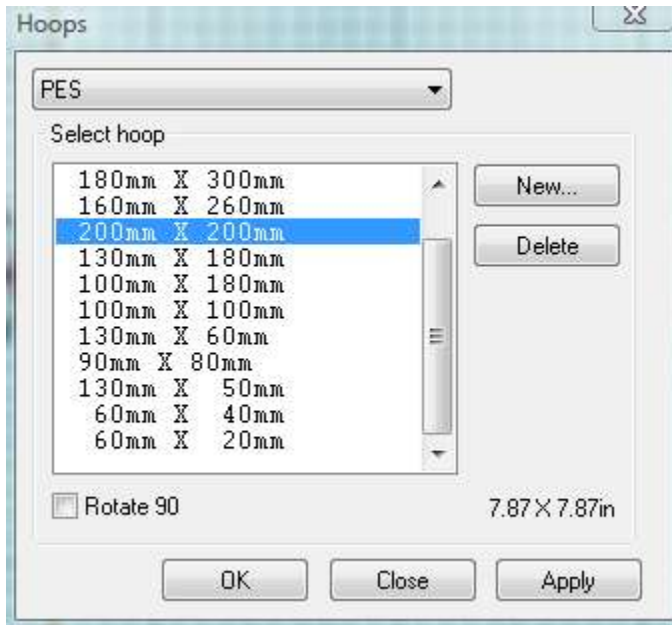


- Under the Font field, scroll down and select “Franklin Gothic Medium” font.





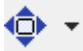
- Set the Font Style to Bold.
- Scroll down and adjust the size to 26.
- Click on OK to apply the changes.
- Click on OK one more time to place the text on the workspace as artwork.

- To determine the placement of the lettering, place the hoop that will be used on the workspace. Click on menu View and Select Hoop. Select the 200mm x 200mm hoop from the list and click on Apply. Click on Close.



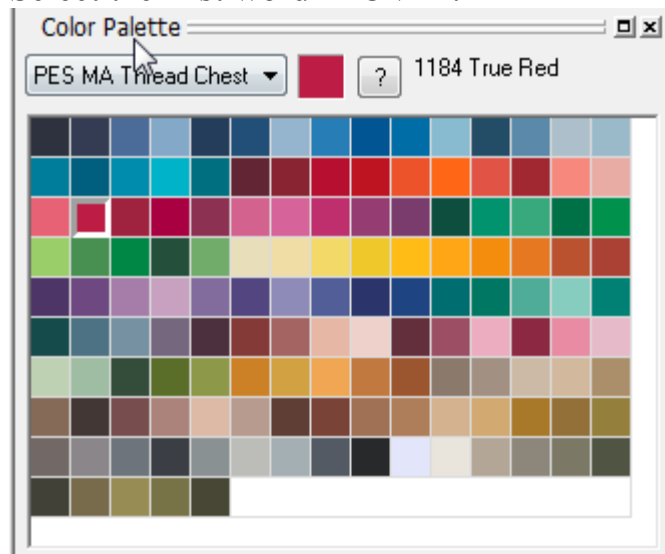
- Follow the next set of directions to place the lettering on separate lines, group the letters in each word and then align the words inside the hoop:


- Click on Select  tool on the left toolbar.
- Left click while dragging the cursor around the word “LOVE”.
- Right click on the selected letters and select Group from the list of commands.
- Left click while dragging the cursor around the word “GROWS” and right click; select Group from the list.
- Left click around the word “HERE” and right click and select Group.
- Now that all of the letters in each of the words are grouped it is easier to select each of the words individually. To be sure that the words are aligned perfectly, left click on the word “GROWS” and click on Center Align tool  on the top toolbar. This will center the word in the hoop.
- Left click on the word” LOVE” and move it two grid lines above the word “GROWS”.
- Left click on “HERE” and move that letter two grid lines below the word “GROWS”.
- To be sure that all three of the words are aligned, left click on each of those words while holding down the CTRL key. This will allow you to select all of the words at the same time.


- Click on the down arrow next to Center Align  and select Horizontal Center Align. (See the illustration below.)



5. In this step, the fill will be added to the letters and the thread colors will be changed for each of the letters:
  - Select the first word “LOVE”.



- In the Color Palette, select the Madeira Thread Chest.
- Click on 1184 True Red thread color.
- With the word still selected, click on Auto Column  on the bottom toolbar.
- Select the word “GROWS” and change the color to 1248 Lime Green from the same color palette.

- Click on Auto Column  to fill the letters.
- Select the last word “HERE” and change the color to 1295 Bright Peacock from the same color palette.

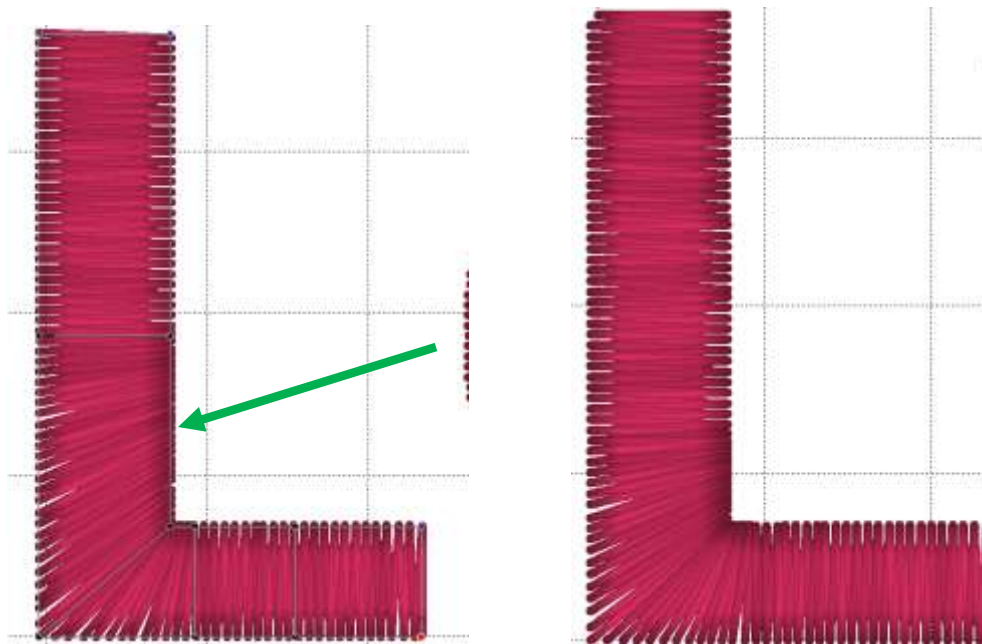
- Click on Auto Column  to fill these letters.

6. To edit the letters, you must select only one letter at a time. Select the letter “L” from the Sequence View and click on the Reform tool



on the left toolbar. Click on the down arrow next to the Zoom tool  and select To Selection. Notice, the directions

that the stitches are placed across the letter. We will make corrections with the angle on these stitches. Follow the next set of directions:



- Click on the down arrow next to the Reform tool and select Add Inclinations from the fly out. Place the tool on the left side of the letter and drag across to the right side and release the mouse. You have just added an inclination line.
- Click on Apply to see the change. Add as many as needed so that the stitching follows the curve of the letter.
- More changes that can be made to the letters are found in the Properties field. Click on the General tab and remove the checkmark from Short Stitches. See the Letter “V” below for the way the letter looked before removing the Short stitches option.
- Click on the down arrow next to Connection End and select Zig-Zag.
- Click on Apply for the changes to be applied.

- Repeat these steps until all of the letters have been modified to your specifications.



7. Click on Save and send to the media source in the format that your machine will read.
8. Embroider the design.

*Your Email Could Use A Little Embroider-E*

Subscribe to the only embroider e-news devoted to embroidery software today :



*Designer's Gallery*  
Lets Embroidery Designs Work For You

For other exciting tutorials like this one, visit our Web site at [www.designersgallerysoftware.com](http://www.designersgallerysoftware.com)

Copyright © by Designers Gallery All Rights Reserved