

“Studio III – Kitchen Towel”



With fall just around the corner, here is a project that will bring all those rich colors indoors. This project will walk you through how easy it is to combine designs using Studio III while using two designs from the Autumn Harvest I design collection from Amazing Designs. This is the second in the Studio III series.

Skill Level: Easy/Intermediate

Created by: Diane Kron, Software and Embroidery Project Manager



Supplies:

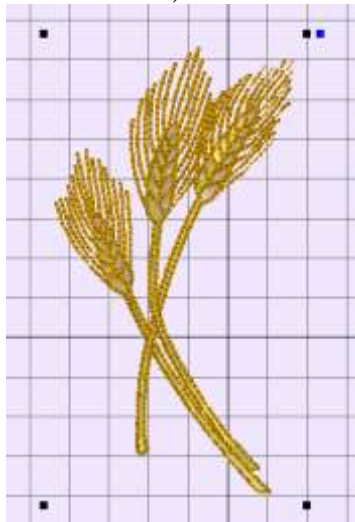
Baby Lock® sewing and embroidery machine
Studio III from Designer's Gallery®
Autumn Harvest I Amazing Design Collection (ADP-33)
Purchased kitchen towel
Baby Lock® Tear-Away stabilizer
Baby Lock Hydro Melt Topping
Temporary spray adhesive
Sewing and embroidery thread
General sewing and embroidery supplies


Instructions

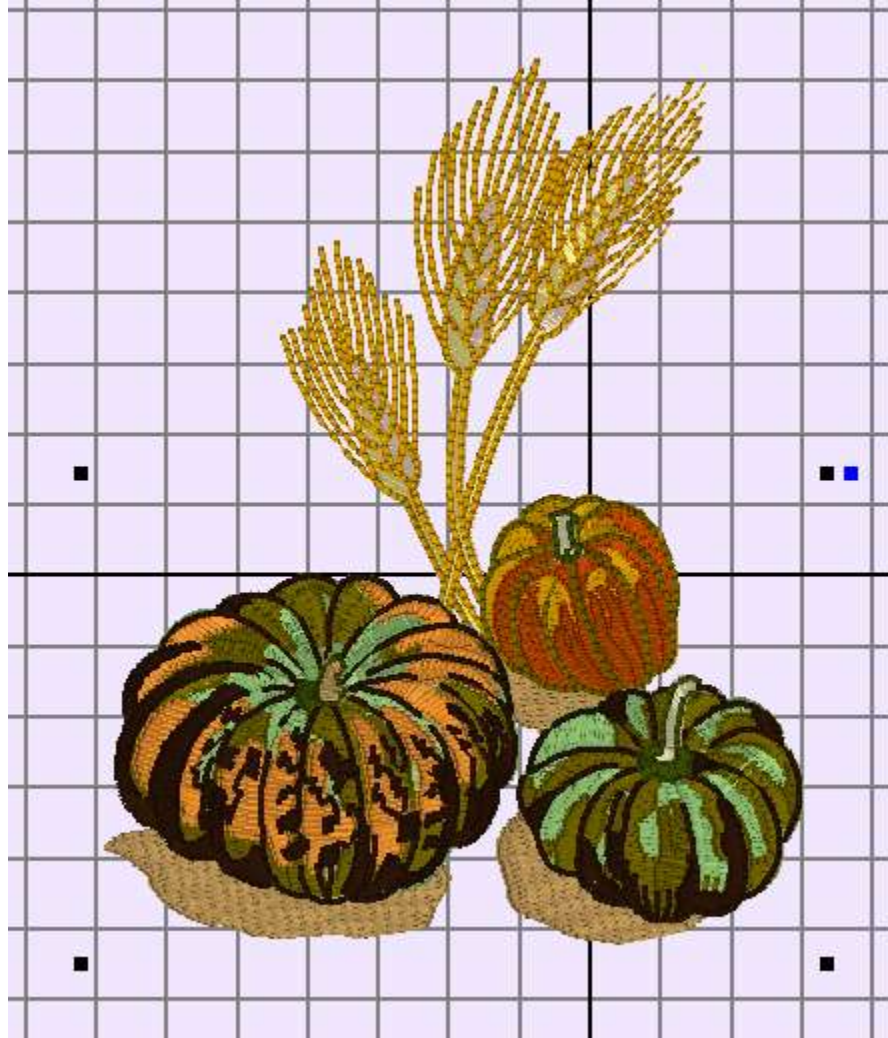
In this project you will learn how to merge designs in the Layout field inside Studio III.


At the Computer:

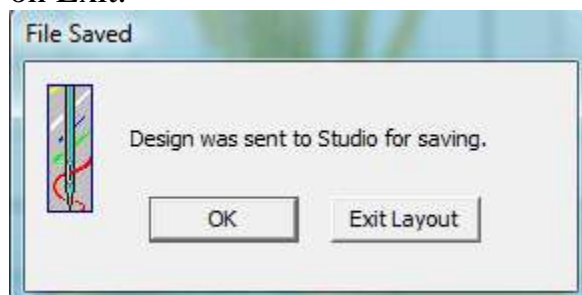
1. Open the program by clicking on the Studio III  icon on the desktop.
2. Locate the installed designs collection ADP-33. Click on design #SWNaH103.pes (Wheat) then hold down the Ctrl key and select design #SWNaH105.pes (Gourds).
3. Click on the Send to Layout  icon. Follow the next set of steps to create the finished design.
 - In the Layout field, the first design selected and placed is the wheat design.
 - Rotate the wheat so that the wheat seeds are pointing upward. Place the cursor over the Blue box and when the rotate tool appears on the screen, rotate the design (*as shown in the following illustration*).



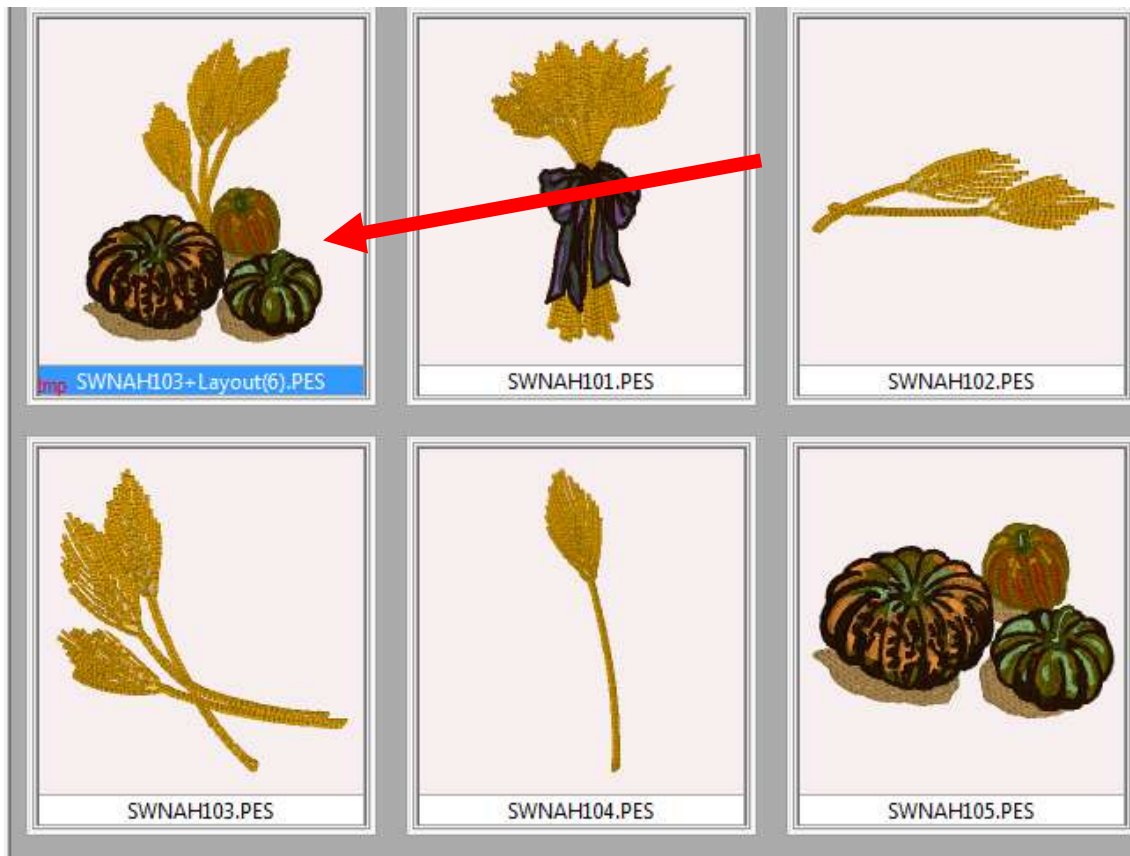
- Click on the Next Arrow  to place the second design (Gourds) on the workspace.
- Move the gourd design over the stems of the wheat.



- Rotate the gourds slightly to the left. Be sure that the stems on the wheat design are completely covered. (*See the illustration above for placement of the gourd design.*)
- Click on the Save  icon and when the dialog box opens click on Exit.



- A Report dialog will open to let you know one file was created. The newly created design will have a different name (*as shown in the following illustration*).



4. Click on the Print icon to print out a template of the design.
5. To save the modified design to the thumb drive, select the new design file.
6. Click on Edit menu, Copy to. When the Copy To folder opens, select the removable Disk (E). Click on OK to send the design to that drive.

Embroidery:

1. Hoop the Baby Lock® Tear-Away stabilizer using the 130mm x 180mm hoop. Spray lightly with the temporary spray adhesive.
2. Pin the design template to the bottom of the towel so that the bottom edge of the design is 2" up from the edge of the towel.
3. Place the towel in the center of the hoop, making sure that the cross marks on the template line up with the marks on the hoop. Finger press in place.
4. With the machine on, retrieve the merged design. Position the needle over the center cross mark on the template. Remove the template from the towel.
5. Place a piece of Baby Lock Hydro Melt Topping over the towel where the design will be embroidered and embroider the design using Madeira embroidery thread.
6. Tear-away the stabilizer from both the front and back of the towel.

Enjoy!

For other exciting projects like this one, visit our Web site at www.designersgallerysoftware.com



Your Email Could Use A Little Embroider-E

Subscribe to the only embroider e-news devoted to embroidery software today :>



Designer's Gallery[®]
Lets Embroidery Designs Work For You