

“Dining in Lace Purse”



Designer evening dress as seen in DME, designer bracelet, and now you have directions for a designer evening bag all brought to you by Interactives™ Dining in Lace from Designer’s Gallery®.

Skill Level: Beginner/Intermediate

Created by: Diane Kron, Software Product Development Specialist

Supplies:

Baby Lock sewing and embroidery machine

Dining in Lace Interactive™ designs by Designers Gallery® (Installed)

Dissolve-Away Mesh Water Soluble stabilizer from Baby Lock®

Silk dupioni

Bag Lady® Bags (B150s) purse frame with purse template

(www.baglady.com)

Swarovski black teardrop crystals

Hot fix applicator

Embroidery and sewing thread

General sewing supplies

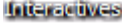
Instructions:

At the Sewing Machine:

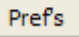
1. Follow the directions provided with the Bag Lady frame using the pattern pieces included. Cutting each of the pieces out from the silk dupioni. Assemble the purse, according to the directions provided by the manufacturer.

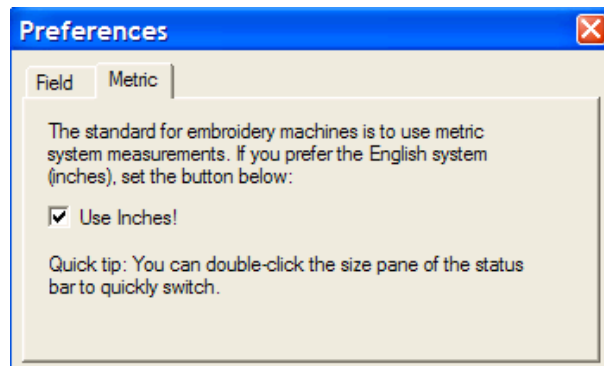
At the Computer:



1. Double click on the Interactives icon  on the desk top.
2. On the command panel, located at the bottom of the workspace, click on the tab labeled Napkin.
3. Next to Theme, click on the down arrow and choose Sonoma.
4. Set the Petal Shape to Daisy.
5. Under the Flowers heading, remove all checkmarks. This will remove the decorations on the top and bottom of the napkin ring.
6. Measure the distance from the top of the purse (seam where the fabric was attached to the handle) to the bottom seam to determine the length of the pieces. If you measured in inches, set the program to calculate

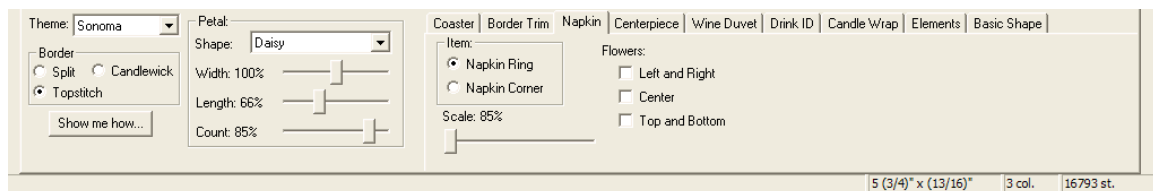



in inches. Click on Prefs  on the top toolbar. Place a checkmark next to Use Inches. Click on the red x to close out of the



field.

7. Slide the Scale scroll bar to a setting that will justify the distance measured. Since the tabs on each end are figured into the measurement you may need to increase the size. The tabs will be removed after embroidery. So we need to increase the length by approximately $\frac{1}{4}$ " to $\frac{1}{2}$ ". The size on the sample is $5 \frac{3}{4}$ " x $13 \frac{1}{16}$ ".



8. Click on the Save  icon. Give the design a name. Save the design to a location of your choice or to a media source that your machine will read.
9. Hoop the Dissolve-Away Mesh Water Soluble stabilizer from Baby Lock®.
10. Using one thread color to match the cream colored silk dupioni, embroider two pieces from the design.
11. Rinse away the stabilizer and dry.
12. Apply seam sealant to the areas on the tabs where the tab meets the band. Allow the seam sealant to dry. Cut away the tabs. For additional support apply another dab of the sealant to the areas where the tabs were cut away.
13. Attach each piece to the side front of the purse along the seam lines. Sew in place.
14. Attach the Swarovski crystals to the center section between the embroidered sections to form a flower. Use the Hot fix applicator for ease when attaching.

For other exciting projects like this one, visit our Web site at www.designersgallerysoftware.com

Your Email Could Use A Little Embroider-E



Subscribe to the only embroider e-news devoted to embroidery software today >

Designer's Gallery
Lets Embroidery Designs Work For You