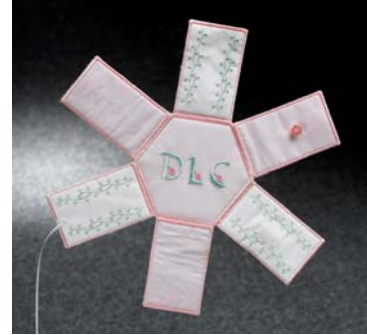


Stitcher's Companion



Since creating this, I have had several people comment on the etui (\ā-twē). I prefer to call it a Stitcher's Companion, a special place to keep a mending kit or small sewing notions. Make one for yourself and one to share with the special person that shared their love of sewing with you.

Skill Level: Basic

Created by: Debbie Cleek, Software Q.A. Specialist

Supplies:

Baby Lock Embroidery Machine with 5" x 7" (130 x 180mm) hoop

Gifts Galore Interactive design collection

Floral Accents Interactive design collection

¼ yd. each of two colors cotton broadcloth (white and pink were used for the sample)

Baby Lock Tear-Away Firm stabilizer

Baby Lock Shape Flex

Wonder-Under® fusible web

Embroidery thread assortment

Bobbin wound with thread used in the needle

Bobbin wound with monofilament

Temporary spray adhesive

Rotary cutter and ruler

Small appliqué or embroider scissors

Cutting mat

Scotch tape

18" 1/8" ribbon

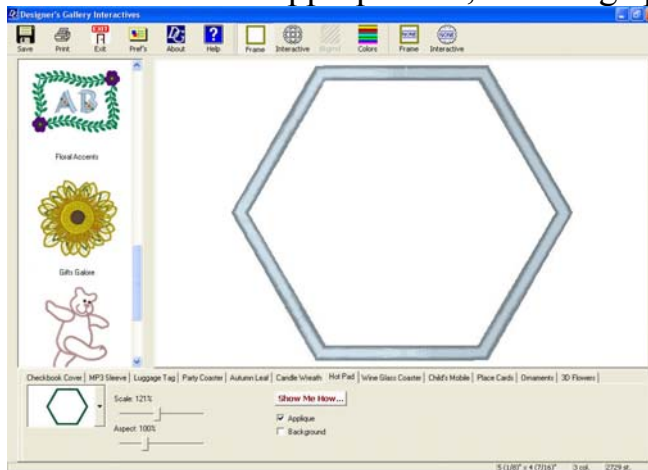
3" ¼" wide elastic

- 1 white felt square
- 1- 1/2" button

Instructions:

Create designs:

1. Open Gifts Galore Interactive software which is installed on your PC.
2. Select the Hot Pad tab, and then click the arrow on the Design selection box to view the list of shapes available. Select the hexagon from the list.
3. Using the Height slide bar, set the height to 5 1/8". This creates an over all size of 5 1/8" X 4 7/16".
Note: The size is displayed in the lower right corner along with the number of colors and stitch count.
4. Click to place a check in the Appliqué box; selecting appliqué.



5. From the menu bar across the top of the screen, select the Interactive



tool then move to the selection window and select Interactive

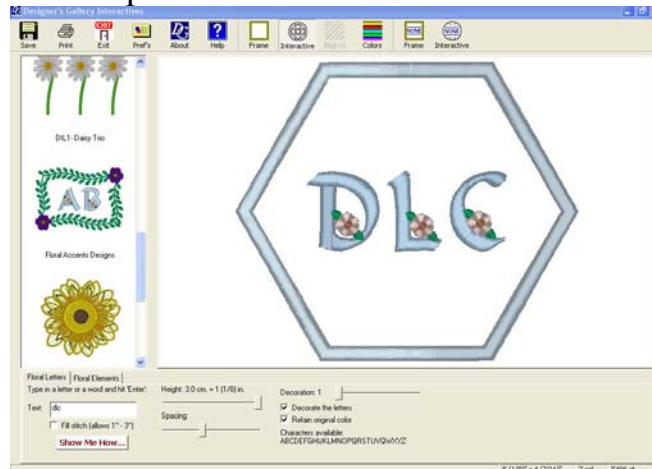


Floral Accents. This opens the available options you can use to personalize the Stitcher's Companion.

Note: If you have other Interactive design collections they will appear here as well. As you add to your collection of Interactives, they will all function in the same manner.

6. To add the monogram, select Floral Accents from the selection window, then select the Floral Letters tab.
7. Type your monogram in the text box and press Enter on the keyboard.

8. The Height slide bar is used to set the letter size. The maximum letter size when using satin stitch is $1 \frac{1}{8}$ ", which is what was used for this project.
9. Use the decoration slide bar to select the flower used to decorate your letters; there are six to choose from. If you would prefer no decoration, click to deselect the "Decorate the letters" option.
10. To adjust the placement of the monogram, click on the letters and drag it to the desired position.



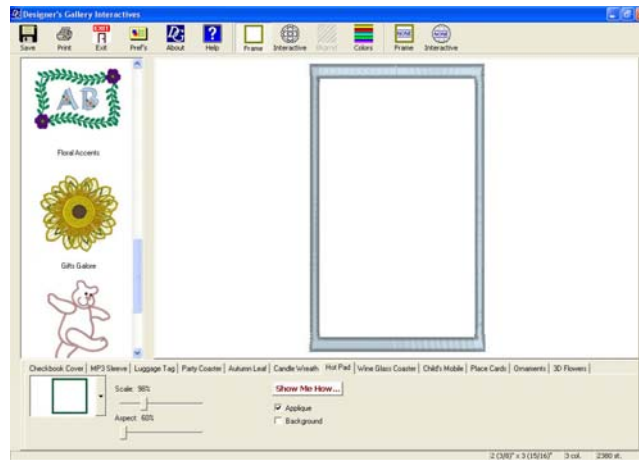
11. You are now ready to save this design. Click "Save" found in the tool bar. This will be the base of the Stitcher's Companion so name your file base. Select your USB drive or other location using the "Save in" drop down menu. Select the format from the list by clicking the down arrow on the "Save As Type" box and clicking the desired format. Click "Save". If your machine requires media other than a USB drive, follow the manufacturer's instructions to transfer the design to that media.

12. From the menu bar across the top of the screen, select the Frame



tool **Frame**.

13. This will take you back to the Hot Pad tab. Click the arrow on the Design selection box and select the square from the list.
14. Using the Scale and Aspect slide bars, set the size to $2 \frac{3}{8}$ " X $3 \frac{15}{16}$ ".
Note: The size is displayed in the lower right corner along with the number of colors and stitch count.
15. Click to place a check in the Appliqué box; selecting appliqué.



16. You are now ready to save this design. Click “Save” found in the tool bar. This will be the side flap of the Stitcher’s Companion so name your file flap. Save it in the same manner as the previous file.

17. To create the flower designs used for 3 of the flaps, select Floral

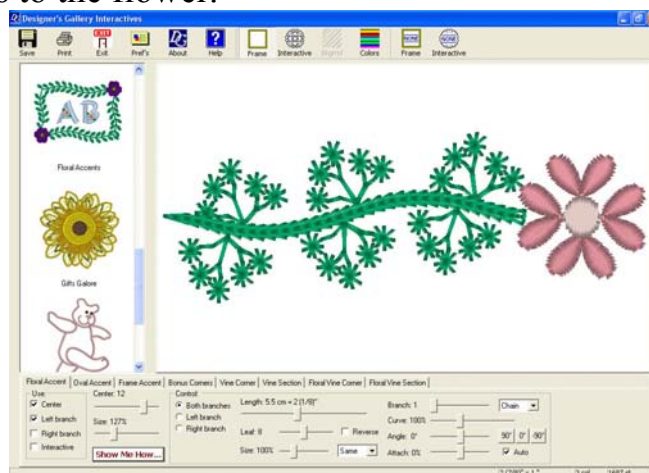


Accents from the selection window, then the Floral Accents tab.

18. In the “Use” box, click to deselect the right branch and interactive.

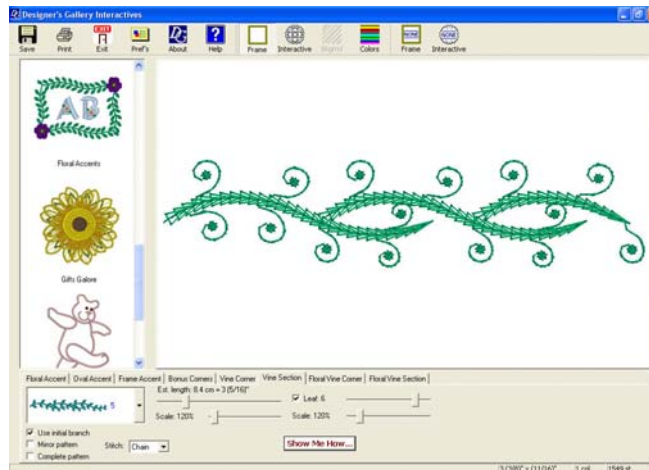
19. Use the Center slide bar to select the desired flower. (Flower 12 was used for the one shown.) Use the size control to adjust the size as desired.

20. In the “Control” box there are slide bars that control the branch and the leaves. In this project the length was set at $2\frac{7}{8}$ ”. The leaf selected is 8; the Size slide bar can be used to adjust the size as desired. Branch 1 with a chain stitch was used for the sample, but feel free to select from the other options. This design will be stitched on 3 of the flap pieces. Keep the size of those pieces in mind when making adjustments to the flower.





21. You are now ready to save this design. Click “Save” found in the tool bar. Name this file flower and save it in the same manner as the previous files.
22. The vines will be created in the same manner as the flower design using the Vine Section tab. Use the slide bars to select the vine and leaf. Vine 5 and leaf 6 were used with length of $3 \frac{5}{16}$ ". The bean stitch option was selected for the vine.

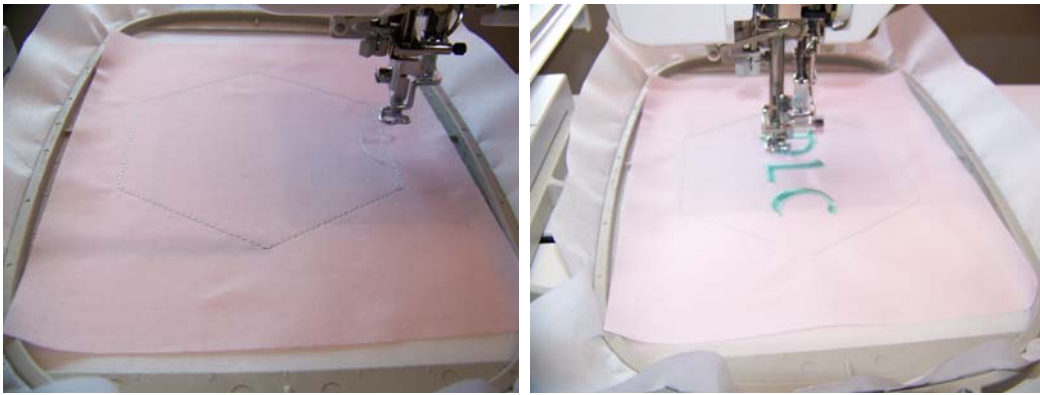


Prepare the fabric:

23. From each of the fabrics and the Shape Flex cut 1 piece 7" x 6 1/2". These will be used for the base.
24. Cut one piece of fabric 6" x 8". Fold this in half and press, creating a piece 6" x 4". Cut one piece of Wonder-Under 6" x 4". Place this inside the folded piece and press to fuse together. This will be used for the pocket on the base.
25. From each of the fabrics and the felt cut 6 pieces 4" x 5". These will be used for the flaps.

Embroidery at your machine:

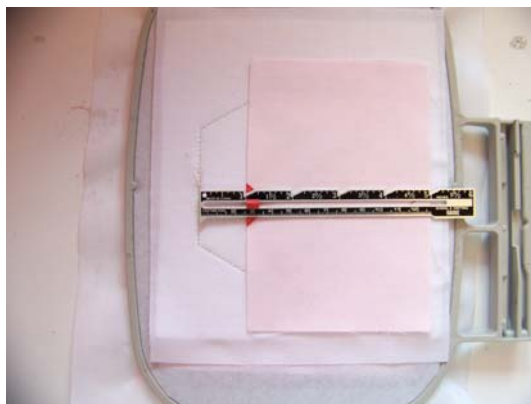
26. Starting with the base, load the design into the machine. Select the proper size embroidery hoop and hoop a piece of tear away stabilizer.
27. Stitch the first color of the design, this will be for placement.
28. Lightly spray the hooped stabilizer with spray adhesive and attach one of the 7" x 6 1/2" pieces of fabric to the stabilizer centering it over the stitching. Use the same color used for the pocket.
29. Stitch the next color tacking the fabric to the stabilizer. Using the color advance function found in most machines, skip forward to the fourth color in the design. This should take you to the monogram steps in the design. Continue stitching to complete the monogram. You should be back at step one of the design.



30. Remove the hoop from the machine but DO NOT remove the stabilizer or fabric from the hoop.
31. Turn the hoop over and spray the back with temporary spray adhesive. Attach the Shape Flex to the back of the hoop. Spray the Shape Flex with spray adhesive and attach the second 7" x 6 1/2" piece of fabric to the Shape Flex.
32. Replace the hoop on the machine and stitch the next color tacking the layers together.



33. Remove the hoop from the machine once again but DO NOT remove the stabilizer or fabric from the hoop.
34. Turn the hoop over and place the pocket on the back, 1" from top edge. Use scotch tape along the outside edges to hold in place. Stitch the next color.



35. Remove the hoop from the machine but DO NOT remove the stabilizer or fabric from the hoop. Using small appliqué of embroidery scissors, trim all the way around the base piece. Trim as close to the stitching as possible without cutting the stitches or the hooped stabilizer. You will need to trim on both the bottom and top sides of the hoop.



- Note:** If you haven't previously wound your bobbin with matching thread to finish the edge, do it now while you are trimming.
36. Replace the hoop on the machine and stitch the next step; a satin stitch that will wrap the edge of the base.
37. Remove from hoop and tear away the stabilizer. Set this piece aside.
38. To stitch the flaps, use embroidery edit or a similar function of your machine that will allow you load more than one design into the embroidery field. Load flap onto the machine, then load flower onto the machine.
39. Stitch the first color of the design, this will be for placement.
40. Lightly spray the hooped stabilizer with spray adhesive and attach one of the 4" x 5" pieces of fabric to the stabilizer centering it over the stitching.
41. Stitch the next color tacking the fabric to the stabilizer. Using the color advance function found in most machines, skip forward to the fourth color in the design. This should take you to the flower steps in the design. Continue stitching to complete the flower. You should be back at step one on the design.
42. Remove the hoop from the machine but DO NOT remove the stabilizer or fabric from the hoop.
43. Turn the hoop over and spray the back with temporary spray adhesive. Attach the felt to the back of the hoop. Spray the felt with spray adhesive and attach a 4" x 5" piece of fabric to the felt. Use the color not used on the top.



44. Replace the hoop on the machine and stitch the next color tacking the layers together.
45. Remove the hoop from the machine but DO NOT remove the stabilizer or fabric from the hoop. Using small appliqué or embroidery scissors, trim all the way around the flap. Trim as close to the stitching as possible with out cutting the stitches or the hooped stabilizer.



46. Replace the hoop on the machine and stitch the next step; a satin stitch that will wrap the edge of the flap.
47. Remove from hoop and tear away the stabilizer.
48. Continue these steps completing the six flaps. For added interest, use the opposite fabric combination on the 3 vine flaps.

Assembling the Stitcher's Companion:

49. Using the same thread in the needle and the bobbin, set the machine up for a zig-zag stitch with a width of 3.5 and length of 1.8.
50. With the base facing pocket side up, match the short side of the flap with one of the sides of the base, zig-zag the flap to the base.



51. Continue attaching flaps, alternating colors and embroidery. You will want to attach 3 with the embroidery facing up and three facing down.
52. Change your machine to a straight stitch, using monofilament in the bobbin.
53. Cut 12" from the 18" piece of ribbon. With the pocket facing up, attach the piece of ribbon to the center of one of the flaps. This will be used to hold the spool of thread.



54. From the remaining felt cut a piece 1 1/2" x 3". Place the 1 1/2" edge along the top edge of the second flap. Attach using a straight stitch close to the edge. This will be used to hold the needles



55. Fold the ends of the elastic under 1/4" on each end. Attach this to the center of the third flap, spacing the ends to easily fit a thimble.



56. With the base facing monogram up, sew the button to the needle flap. Attach the ribbon to the flap opposite the needle flap so it can wrap around the button to secure the flaps.



This piece is pretty to display as well as to use. Place this on a shelf and it will be handy for your simple mending projects. What a special place to keep your favorite heirloom thimble.

