

## **“Holiday Bell Pull”**

---



There is more to Gifts Galore than items you can make and give to others. Use it to make this Holiday Bell Pull to hang by your door to welcome your holiday guests.

**Skill Level:** Intermediate

**Created by:** Debbie Cleek, Software QA Specialist, Designer's Gallery

## Supplies:

Baby Lock Embroidery Machine with a 4" x 4" (100 x 100mm) hoop

Gifts Galore Interactive design collection

¼ yd green velvet

¼ yd cotton holiday fabric for the backing

½ yd red organza

¼ yd green organza

2 yds of 1 ½" wide red satin ribbon

1 yd of ¾" wide holiday ribbon

1 yd decorative cord

1 spool of ⅛" wide red satin craft ribbon

8 gold jingle bells

½" dowel rod by 10" long

Baby Lock Dissolve-Away Mesh stabilizer

Baby Lock Cut-Away Plus stabilizer

Embroidery thread assortment

Bobbin wound with embroidery bobbin thread

Rotary cutter and ruler

Fabric marking pen or pencil

Small appliqué or embroider scissors

Cutting mat

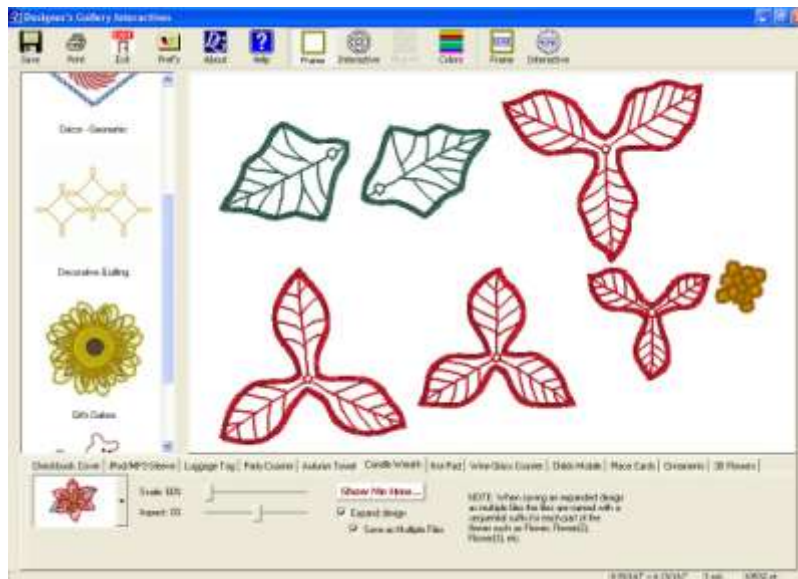
All-purpose sewing thread


Hand sewing needle

## Instructions:

### Create designs:

1. Open Gifts Galore Interactive software which is installed on your PC.
2. Select the Candle Wreath tab and the Poinsettia will appear on the screen.
3. Using the Scale slide bar, size the poinsettia down to 60% or 3 ¾" x 3 13/16".
4. Click to place a check in the Expand Design box; this expands the flower sections used to create the poinsettia and enables it to be saved in sections to sew on your machine.
5. Click to place a check in the "Save As" multiple files box. This will save the expanded design as multiple files named with a sequential suffix for each part of the poinsettia such as poinsettia, poinsettia(2), poinsettia(3), etc.



6. You are now ready to save the design. Click “Save”  found in the tool bar. Name your file, select your USB drive or other location using the “Save in” drop down menu. Select the format from the list by clicking the down arrow on the “Save As Type” box and clicking the desired format. Click “Save”. If your machine requires media other than a USB drive, follow the manufacturer’s instructions to transfer the design to that media.

### Prepare the fabric:

1. To create the flowers, simply layer a piece of the Dissolve-Away Mesh stabilizer between 2 layers of the red sparkle organza. Hoop this in the largest hoop for your machine and you are ready to move to the machine.
2. Cut both the velvet and backing fabric to 36” in length making the overall size 9” x 36”.
3. Cut four 12” pieces from the  $\frac{1}{8}$ ” red satin craft ribbon.

### Embroidery at your machine:

1. Using the embroidery edit or similar function of your machine that will allow you load more than one design into the embroidery field, load the flower sections onto the machine.  
**Note:** All four of the flower sections should fit in a single 130mm x 180mm hoop.
2. Thread the machine with rayon embroidery thread to match the organza in both the needle and the bobbin. Stitch the poinsettia.



3. Repeat this to create the four poinsettias needed to create the bell pull.
4. Stitch four sets of leaves in the same manner as the flower sections.  
**Note:** The yellow center pieces of the poinsettia are not used for this project.
5. When all the pieces have been completed, cut them out using small embroidery scissors. Cut close to the satin stitching being careful not to cut the stitches.
6. Once all the pieces have been cut out, rinse them in warm water to remove the water soluble stabilizer. Spread a towel and lay the pieces flat to dry.

#### **Assembling the Bell pull:**

1. Lay velvet flat, right side up, on your workspace. Lay 1 ½" red ribbon down the center of the velvet. Match the top of the ribbon with the top of the velvet and trim the excess from the bottom. This will be used for the bow at the when finished.
2. Lay the ¾" holiday ribbon down the center of the red ribbon. Pin all layers to secure.
3. Measure 8" from the top and make a mark in the center of the ribbon. Measure 9" from there and mark. Do this two more times, measuring 9". You should have four markings.
4. Set the machine up for regular sewing, selecting the bar tack.
5. Stitch a bar tack at each of the markings, securing a piece of the ⅛" red ribbon in the bar tack.
6. Set the machine up for embroidery and load the flower center onto the machine.
7. Measure 3 ½" from the top and place a mark in the center of the holiday ribbon.
8. Hoop a piece of Cut Away Plus stabilizer in the 4" x 4" hoop. Spray with spray adhesive and place the velvet on the stabilizer centering the mark in the center of the hoop.
9. Layer the leaves and flower sections on top of the mark and stitch the center of the flower. You may need to hold this lightly while it is

- sewing to keep the petals from falling under the needle while it is sewing.
10. Repeat this placing a flower centered between each of the pieces of  $\frac{1}{8}$ " ribbon.
  11. To create the pointed bottom, fold the backing fabric in half lengthwise. Using a ruler and rotary cutter, cut the bottom to the desired angle.
  12. Open and lay flat on top of the velvet, right sides together. With a rotary cutter and ruler use the backing as a pattern to cut the point at the bottom of the velvet.
  13. With right sides together, match all raw edges and pin. Thread a hand sewing needle with coordinating all purpose thread. Using a small running stitch, sew around the bell pull leaving a  $\frac{1}{2}$ " seam allowance to attach the front to the back. Leave the top open for turning. Trim the seams and the corner.  
**Note:** If you prefer to use your machine for this step, use a medium length, medium width zigzag stitch. You can also use a serger and set the differential feed to prevent puckering.
  14. Turn the bell pull right side out and press the edges. For best results when pressing, lay a heavy bath towel on the ironing board and place the bell pull velvet side down on the towel. Set the iron to a steam setting and lightly press the seam letting the steam do most of the work.
  15. Fold the top of the bell pull down  $\frac{1}{2}$ ". Fold the top again  $1\frac{1}{4}$ " to form the casing for the dowel rod. Using a hand sewing needle whip stitch this in place.
  16. Tack the remaining yard of  $1\frac{1}{2}$ " wide red ribbon to the bottom of the bell pull and tie into a full bow.
  17. Thread 2 jingle bells on each of the  $\frac{1}{8}$ " red ribbons and tie with a bow to secure.
  18. Slide the dowel rod into the casing and tie the decorative cording to each end.

Hang this by your door to welcome your holiday guests.

For other exciting projects like this one, visit our Web site at [www.designersgallerysoftware.com](http://www.designersgallerysoftware.com)